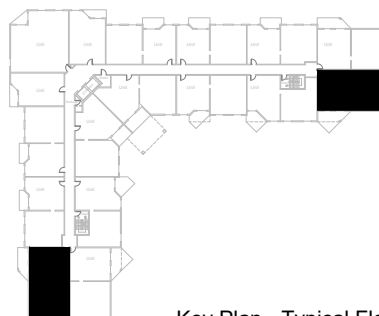
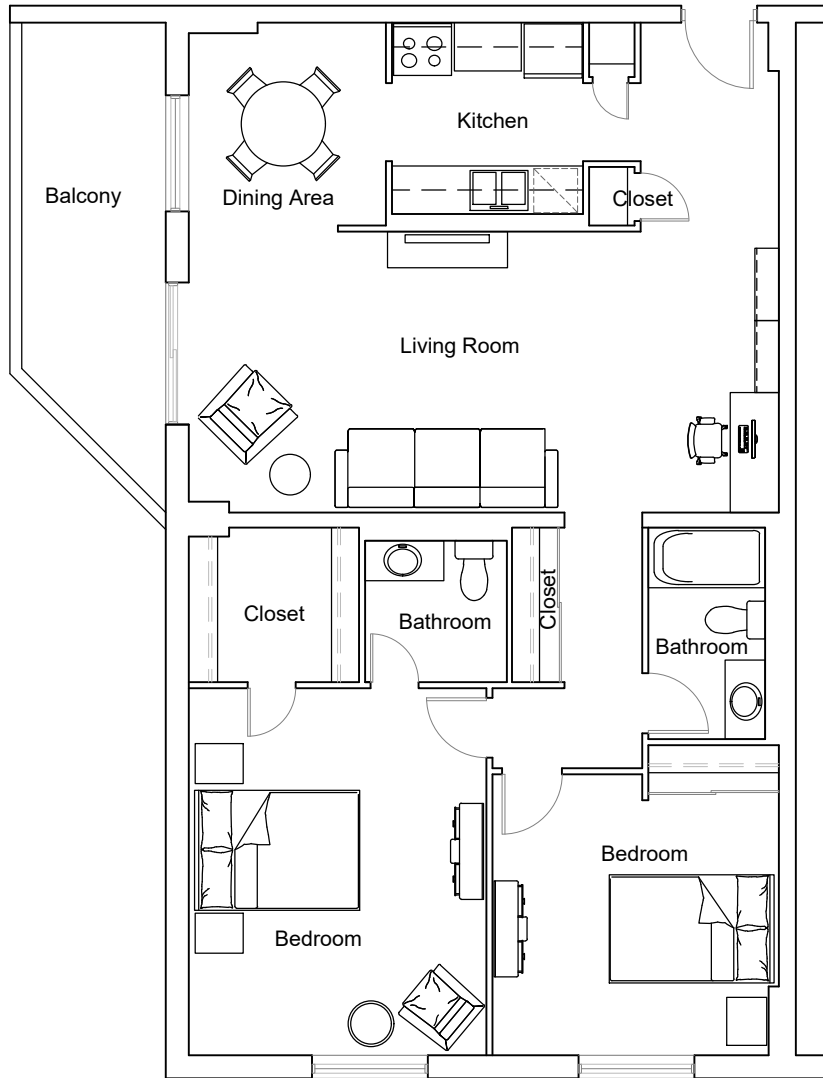


# Pineridge - 2 Bedroom 1,049 ft<sup>2</sup>



Units: 219-919 + 102-902

**RESIDENTIAL**



Key Plan - Typical Floor

Last Modified; 2022 01 24



For more information please contact:  
[info@summitproperties.ca](mailto:info@summitproperties.ca) | 519.914.2761